

Overview

The new Chalwyn XT is the most advanced butterfly style positive air shut off valve on the market today. Engineered with the latest technology and loaded with enhanced features, this valve shuts down a runaway diesel by positively choking off engine intake air. The valve operates as part of a fully-automatic overspeed shutdown system when paired with our Revguard 2 speed switch and activation kit.

The XT range currently offers 12V or 24V electric actuation of the XT solenoid to rapidly close the valve's butterfly disc which shuts off intake air flow into the engine. The XT range is available in a variety of sizes to fit your specific applications.

It is manufactured from corrosion-resistant RoHS compliant materials that offer toughness under extreme temperatures and resistance to corrosive environments.

The butterfly valve most trusted by engine manufacturers

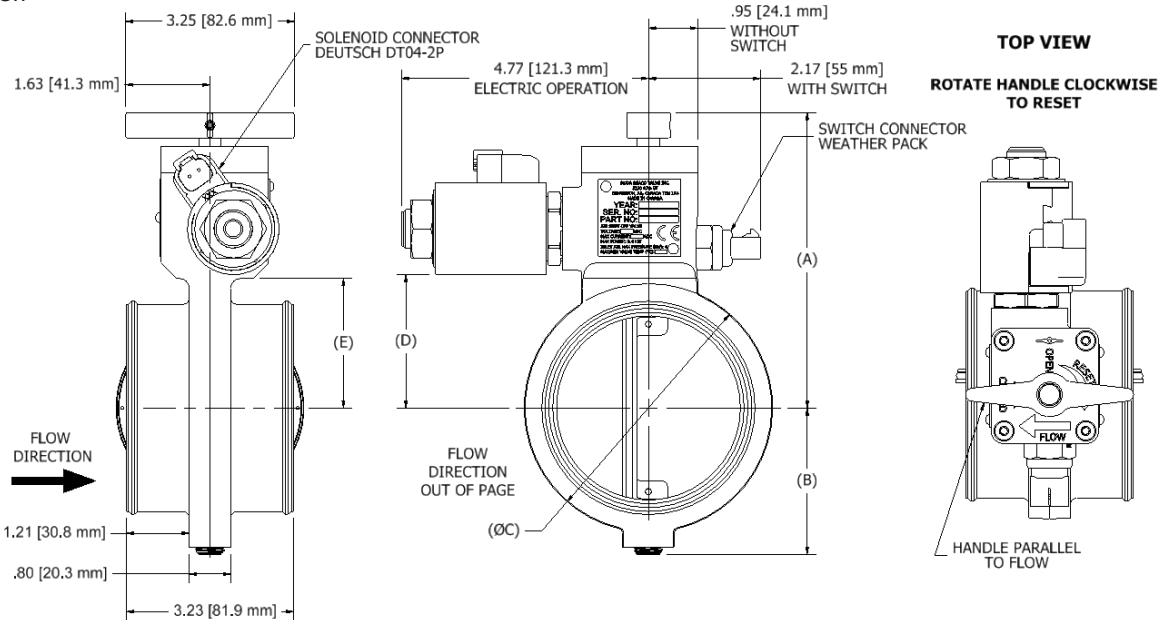


New Enhanced Features

- Temperature range of -40°C to 125°C
- Tested to rigorous engine OEM standards for:
 - resistance to shock
 - corrosion
 - vibration
 - life cycle
 - ingress protection ratings IP69k and 1P67
- Optional integrated valve position switch
- Field-serviceable components limit downtime

Dimensions

Side View



VALVE DIMENSIONS (mm)						
OD	A	B	C	D	E	Weight
89 mm	138.7	65.4	109.2	58.9	57.2	1.8 kg
102 mm	145.0	71.8	121.9	65.3	63.5	1.9 kg
127 mm	157.7	84.5	147.3	78.0	76.2	2.1 kg

VALVE DIMENSIONS (mm)						
OD	A	B	C	D	E	Weight
140 mm	170.4	88.3	160.0	84.3	82.6	2.5 kg
152 mm	176.8	94.6	172.7	90.7	88.9	2.6 kg
178 mm	189.5	107.3	198.1	103.4	101.6	2.8 kg
203 mm	202.2	120.0	223.5	116.1	114.3	3.1 kg

Specifications

Standard materials	Valve/disc	Anodised aluminium
	Seals	Viton
	Solenoid housing	Plated steel
Intake & ambient air temp	Minimum: -40°C / -20°C (based on valve selection) maximum: 125°C	
Max charge air pressure	5.0 bar (72 psi); Solenoid coil duty cycle: 60s max on/540s off (11%)	
Electric solenoid	12 VDC	26.4 Amps (max) @ 13.2 VDC / -40°C
		19.8 Amps (max) @ 13.2 VDC / 25°C
	24 VDC	13.2 Amps (max) @ 26.4 VDC / -40°C
		9.9 Amps (max) @ 26.4 VDC / 25°C
Switch rating	4.4 Amps DC maximum	

Product Code Definitions

Example	XT	3	5	B	1	B	3.5" OD, 24V, normal temp, valve open, switch open
Basic model code	XT						
							mm OD
							inches OD
		3	5				89
		4	0				102
		5	0				127
		5	5				140
		6	0				152
		7	0				178
		8	0				203
Actuator				A			Electric power to close - 12 VDC
				B			Electric power to close - 24 VDC
Temperature (ambient air)					1		Normal (-20°C to +125°C) not available on 5" and larger
					2		Low temp (-40°C to +125°C) ≤4" is special order
Switch type					A		No switch
					B		Valve open, switch open (100°C max)
					C		Valve open, switch closed (failsafe) (100°C max)
					D		Valve open, switch open (heavy duty) Available on 6", 7", 8"
					E		Valve open, switch closed (heavy duty) Available on 6", 7", 8"

Note: Switch E option has 33kΩ internal shunt resistor.

Accessories for Automatic Systems

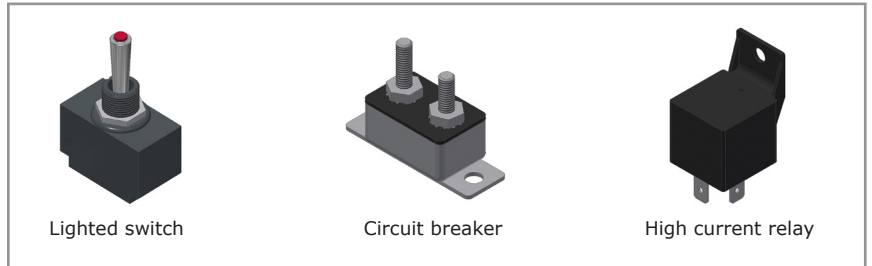
Activation Kits	
Part Number	Description
1520-001	Revguard 2 speed switch
AK2-E1-RM-CH	Activation kit for 12V valve
AK2-E2-RM-CH	Activation kit for 24V valve

Hose and Clamp Kits	
Part Number	Description
IK-3500H-01	Hose and clamps kit for 3.5 in (89 mm)
IK-4000H-01	Hose and clamps kit for 4.0 in (102 mm)
IK-5000H-01	Hose and clamps kit for 5.0 in (127 mm)
IK-5500H-01	Hose and clamps kit for 5.5 in (140 mm)
IK-6000H-01	Hose and clamps kit for 6.0 in (152 mm)
IK-7000H-01	Hose and clamps kit for 7.0 in (178 mm)
IK-8000H-01	Hose and clamps kit for 8.0 in (203 mm)

Optional Accessories



Revguard speed switch (1520-001)

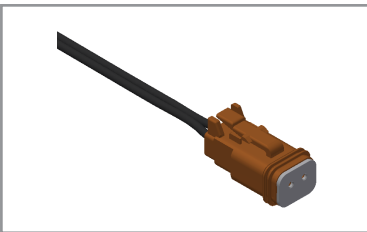


Lighted switch

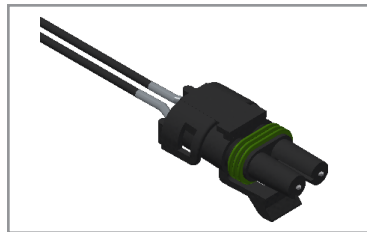
Circuit breaker

High current relay

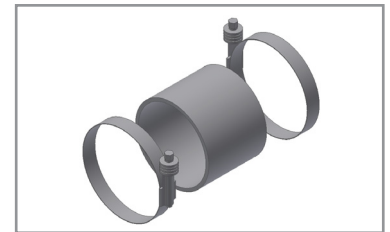
Activation kit components (AK2-E1-RM-CH)



XT solenoid connector (RKS-XT-016)
Fitted with 300 mm wires. One supplied with each XT valve.



XT switch connector (RKS-XT-017)
Fitted with 300 mm wires. One supplied with each switch version.



Hose and clamps kit (IK-3500H-01)

Trusted Industry Experts

We are the leading provider of air intake shutoff valves and systems with manufacturing facilities in Canada, England, and the United States to serve our global markets.

Please contact our customer service department or your local distributor to discuss your requirements.

Americas

AMOT - USA
Tel +1 (281) 940 1800
Fax +1 (713) 559 9419
customer.service@amot.com

AMOT - Canada
Tel +1 (780) 465 4429
Fax +1 (780) 469 6275
customer.service@amot.com

Asia Pacific

AMOT - China
Tel +86 21 6279 7700
Fax +86 21 5237 8560
shanghai@amot.com

Europe, Middle East and Africa

AMOT - England
Tel +44 (0) 1284 715739
Fax +44 (0) 1284 760256
sales@chalwyn.com

AMOT - Germany
Tel +49 (0) 40 8537 1298
Fax +49 (0) 40 8537 1331
germany@amot.com

www.chalwyn.com